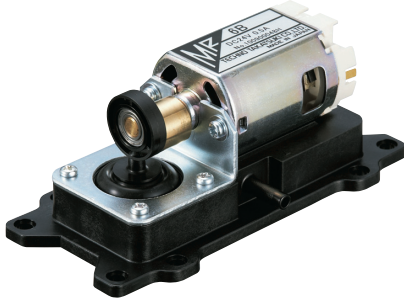


Small capacity air pump
MR-6B / 6BS



DC motor driven

MR-6B : Pressure type

MR-6BS : Vacuum type

Built-in use

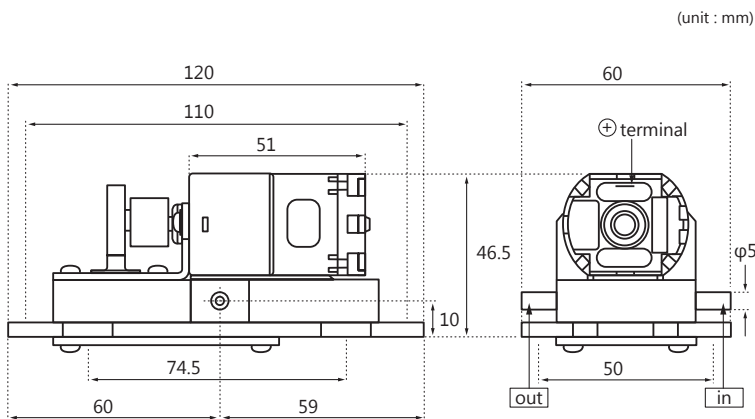
*No power plug included because it is designed for built-in use.

*Rubber-made legs are sharp-pointed. Not for self-standing installation.

Applications

- Supply and pressurization of air in air mats
- Extraction of air for vacuum packaging
- Suction means for air-tweezers
- Air sampling

Dimensions



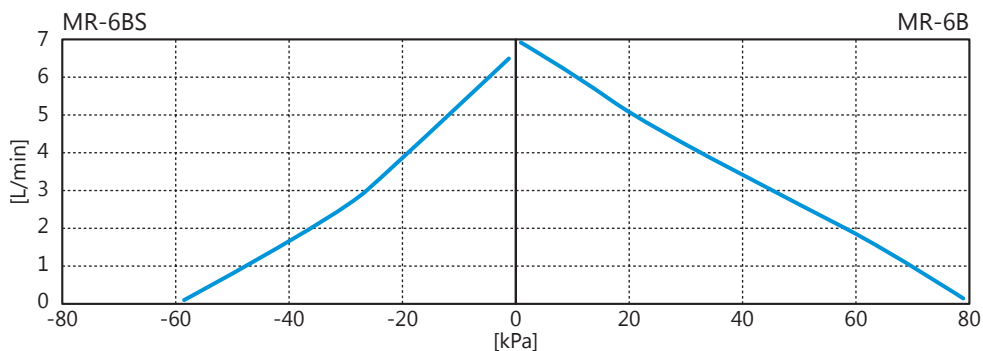
Specifications

	MR-6B / 6BS
Rated voltage [V]	DC24
Power current [mA]	500
Arflow volume [L/min]	7 (-6.5)
Sound level [dBA]	58
Weight [kg]	0.28

*The value in parentheses represents MR-6BS vacuum.

*Sound data shown is with pump operating at 20kPa and exhaust plumbed away from the unit.

Performance Curve



* All characteristics values are only for reference, and are not guaranteed values.
* Note that the operating temperature for our pumps is 41°F(5°C) to 104°F(40°C).